

Tool Services: Optimisation & Data Administration

Our service package is your added value! One-off monthly or annual subscription with ongoing data maintenance at regular intervals and exclusive support.

This increases your efficiency at the same time as making you more flexible. Individually combine additional modules for a perfectly networked factory.

The benefits for you:



- Lower production costs increase your competitiveness
- Perfectly designed tools improve the quality of your products
- Take advantage of innovative and state-of-the-art tools
- Production-related KPIs for statistical evaluation and provision of transparency
- Full utilisation of the performance of your machine tools by perfectly designed NC programs
- Higher output by minimising idle times
- Customer care in your own company
- Individual project folder

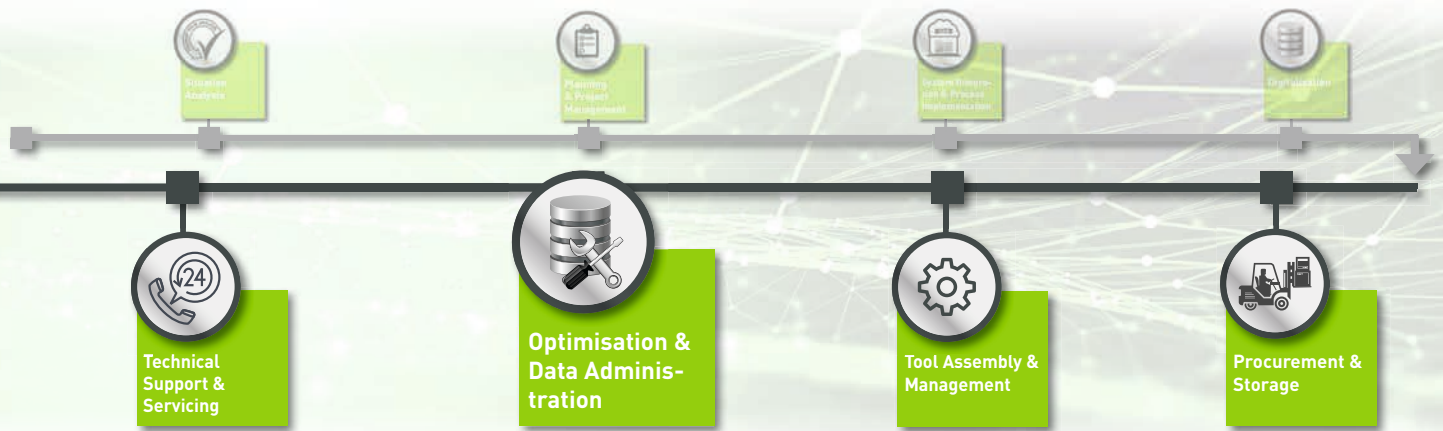
KELCH products are synonymous with precision and quality

- Presetting, measuring, assembly, shrink-fitting and cleaning – your one-stop shop
- Virtual tool and component data in a central database

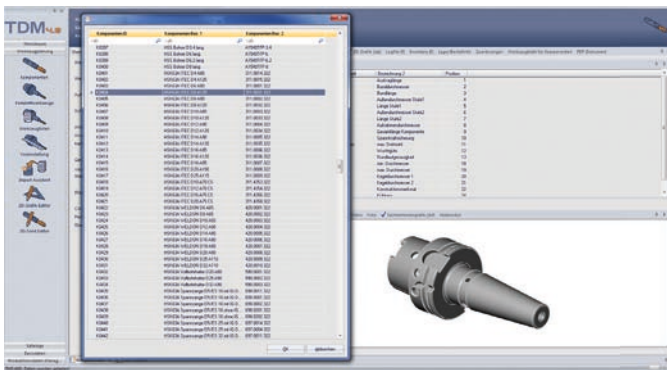


Our aim for your production: increase quality and lower costs!

Should you have questions during implementation, we will answer them clearly and understandably.
Give us a call: +49 (0) 71 51 / 205 22 - 0.



Our services:



We maintain your data using our tool management system.

- **Analysis and optimisation of NC programs**

Checking of the programs used and possible optimisation of old NC programs. An analysis based on the current status of your programs identifies their compatibility with your machinery. There is also further development involved in the process plan and implementation.

- **Introduction of KPIs for continuous improvement**

Key Performance Indicators (KPI) provide data on the throughput times of orders, machining times of workpieces, services lives of tools, wastage quotas or machine idle times. KPIs coupled with a satisfactory remuneration scheme lead to improved morals amongst employees. Even simple measures enable KPIs to be improved.

- **Provision of innovative tools to optimise machining**

Improved machining quality of the workpiece, longer tool service lives or energy-efficient machining: we provide our experience in relation to the deployment of new cutting tools, cutting materials or machining technologies. Take advantage of innovative technologies.

- **Analysis and optimisation of your machine control**

The quality of the workpiece depends on the machine and your control. The control is constantly optimised by the manufacturer to ensure that the machine can be used more effectively and efficiently, ensuring that you can run your machines at maximum capacity.

- **Kelch experts directly on site**

Our experts perform an analysis, stocktake and hold discussions with you in your company. This provides us with an immediate picture of your production, the available equipment, defines specific aims and the time frame for implementation. The result: a document listing requirements and proposed implementation. At the same time, this produces a traditional requirement specification and functional specification.

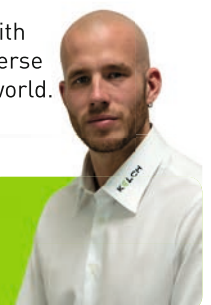
- **Production of your project folder**

“Optimisation on demand” means that we individually adapt to your situation, your requests and your requirements. All the relevant modules and information are contained in your exclusive project folder.



Our service at a glance!

Simply scan the QR code with your smartphone and immerse yourself in the connected world.
www.kelch.de



Give us a call – we’d be glad to advise you!

Our team offers comprehensive consulting within Smart Factory Services.
You can reach us on: +49 (0) 71 51 / 2 05 22 - 0.