

# TDM Base Module

Correct and structured  
Basic data

# KELCH

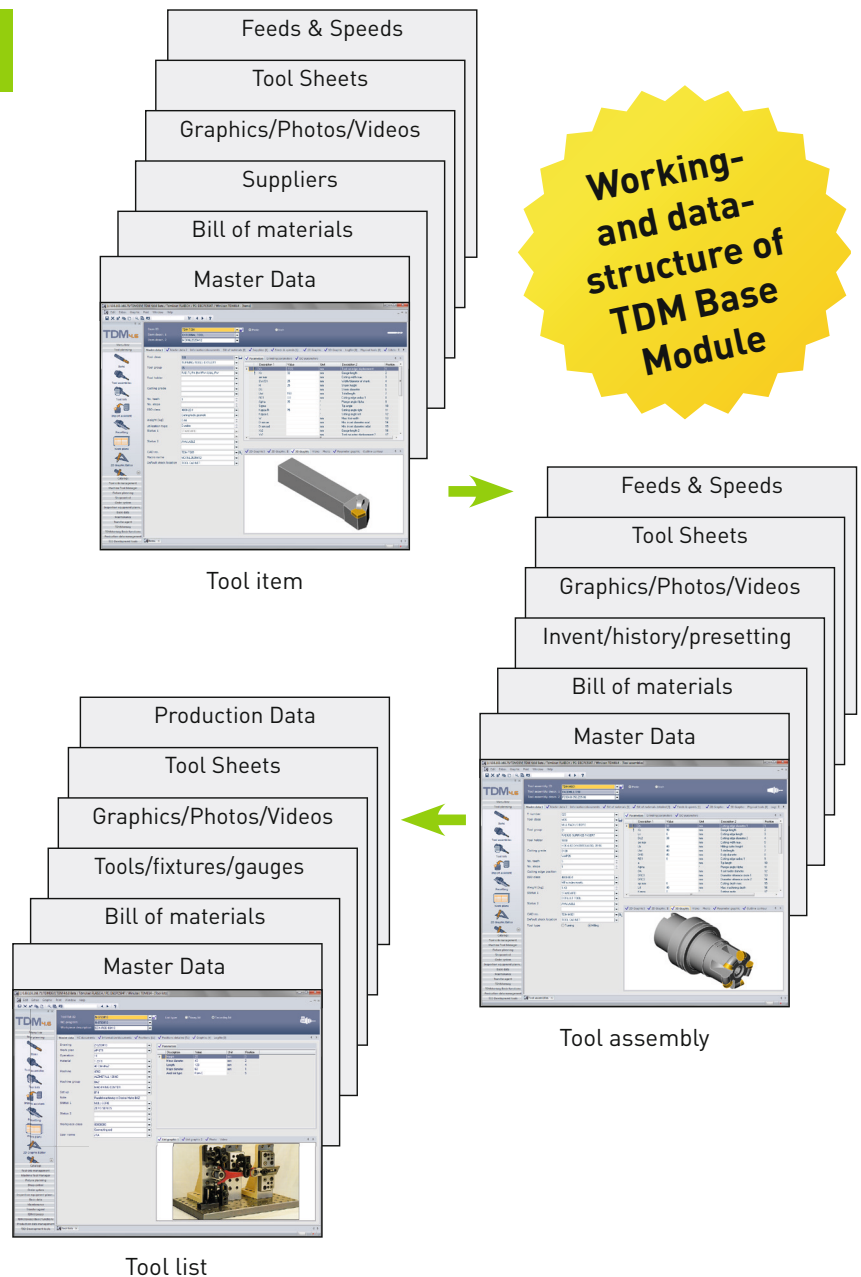
## The benefits for you:

- Up to 50 % faster tool selection and definition.
- Efficient standardization, with reduction of tool varieties:
  - 25 % less tool costs
  - Higher frequency of use
- 50 % faster data input due to integrated tool catalogs.
- The software is available in more than 20 languages and can therefore be ideally used for worldwide operations.
- KELCH offers comprehensive consulting on the topic of Smart Factory services as well as expert assistance for creating a tool database. Experience and technical know-how play a crucial role in the efficient implementation of such a project.

In conjunction with TDM Systems GmbH,  
Competence in Tool Data Management

**tdmsystems**

[www.tdmsystems.com](http://www.tdmsystems.com)



## The TDM Base Module lays the groundwork for the many helpful functions of the TDM tool data management system.

Its many features and user friendly design make cost-conscious and transparent data organization possible in all areas of your company. The TDM software interfaces allow it to exchange data not only with ERP, CAD/CAM and simulation systems but also with storage systems, presetting devices and machines in the production area.

Among the TDM highlights are its efficient features for data input and straightforward operation, along with practice-oriented functions like automatic assembly of tools and easy tool selection.

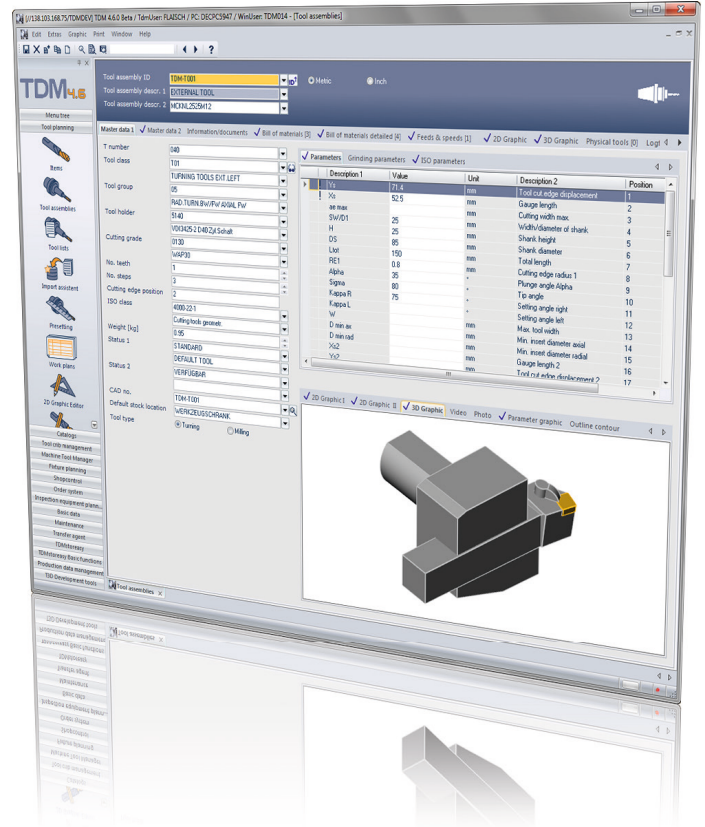
# TDM Base Module

Correct and structured  
Basic data

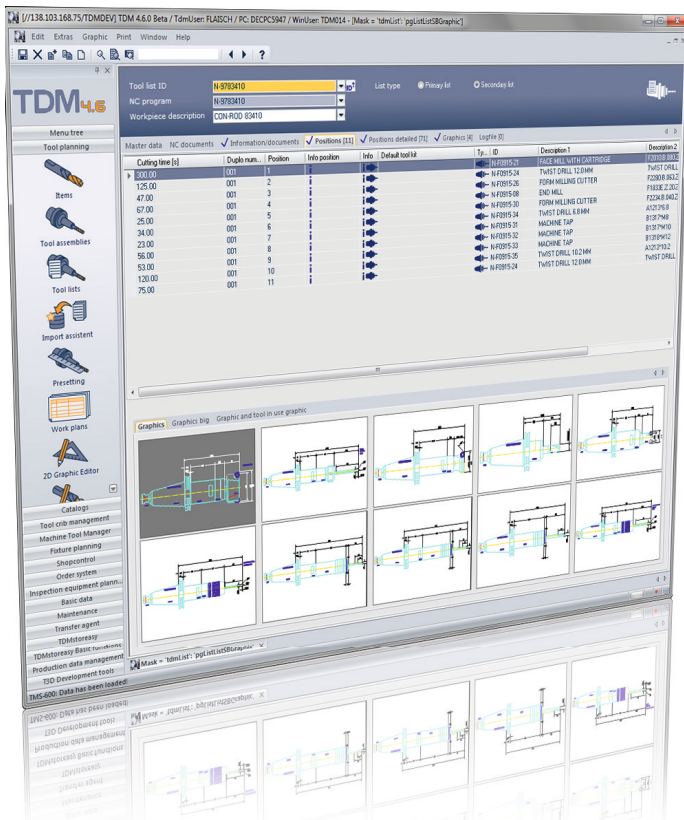
# KELCH

## Features at a glance

- Easy-to-use graphic tool selection by class, group or machining operation
- Automatic tool assembly, with matching component checks to ensure accuracy
- Integrated generation of 2D and 3D graphics, photos and videos
- Reliable technology data by integrated material tables and cutting grade tables
- Automated generation of tools lists and bill of material



- A powerful function for generating and comparing tool lists, machine kits and tool kits
- Built-in multilevel reports (tool assembly, components, tool lists, etc.)
- Embedded cutting tool catalogs of more than 50 different tool manufacturers



In conjunction with TDM Systems GmbH,  
Competence in Tool Data Management

**tdmsystems**  
www.tdmsystems.com