

# KENOVA set line H3

The compact entry-level tool presetter  
for horizontal tool measurement.

# KELCH

Pioneer for precision and efficiency

## The benefits for you:

- Compact grey cast iron design for use in the most confined spaces.  
WxDxH (mm): 1784 x 858 x 1558
- Convenient positioning of the axes by pneumatically released quick adjustment and also endless fine adjustment.
- Measuring length X (Ø): 420 mm  
Measuring length Z: 350 mm
- Versatile table layouts with tool holders with diverse interfaces (VDI, HSK, PSC, Index etc.), manual MPS spindles, UWS and customised fixings.
- Optionally available as a version with swivelling table, providing even more options for equipping with tool holders and/or spindles.
- CCD camera with different control and analysis programs
- KENOVA set line H3 is available in three versions: 1. Manual, 2. Manual with Autofocus (CNC spindle required), 3. Fully CNC



## KENOVA set line H3 in detail:



Versatile table layouts with tool holders and spindles



Ergonomic handle



Fine adjustment in both axes



Possible set-up with three tool holders and one CNC spindle



EASY software (optionally CoVis)



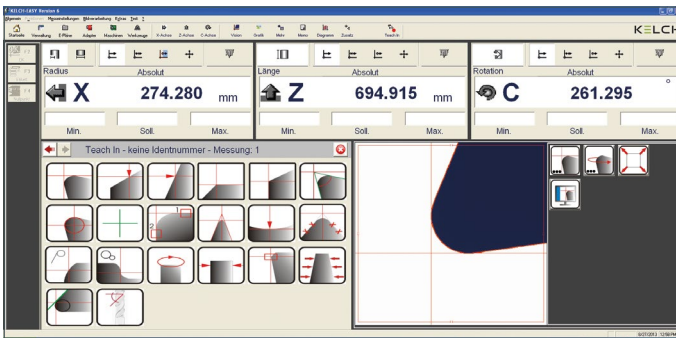
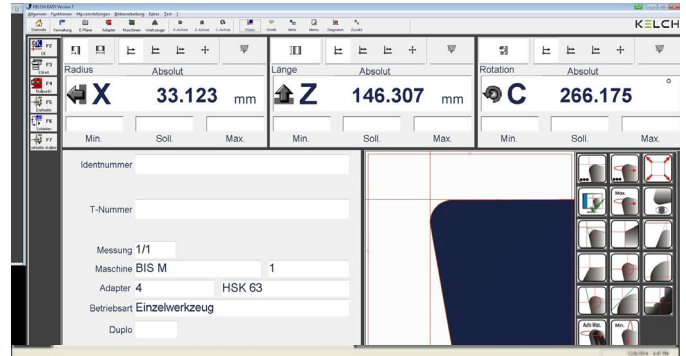
Optional optics carrier with turning centre camera

## Proven software for convenient operation!

Proven EASY software offers users every option for ease of operation.

The software informs users in a structured manner about the tool, adapter, measuring function and values measured on the tool – all on a single screen.

Users are simply and intuitively guided by the software when setting up the analysis programs to obtain the measuring result they require in the shortest time. See for yourself!

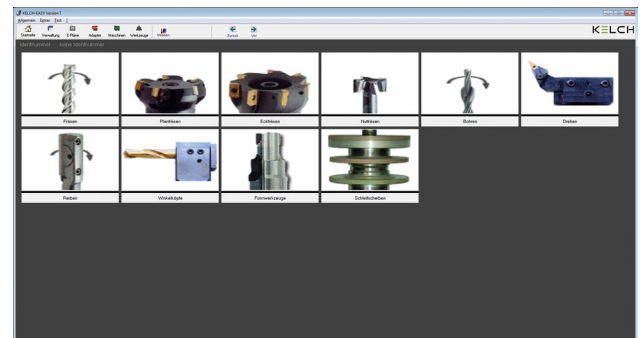


### Everything included!

A host of useful features, such as the checking of radial and axial run-out, total image function with live image for monitoring purposes and an additional top light for tool inspection, are all included as standard. The tool set-up plans are very simple to produce. The saved measuring processes can be called up and started just as easily using the tool identification number or the RFID chip.

### A wealth of options available!

A host of different options are available for additional functions. All functions are ultra-simple to use – from automated tool programming workflows to implementation of post processors and NC parameters.



### Fit for Industry 4.0!

Whether you wish to print labels, transmit data via the network, connect to tool management systems, CAM systems or using QR codes: EASY software provides you with all the options.