

# RoWi III

Table-top taper cleaning device for tool holders. A clean solution.

# KELCH

Pioneer for precision and efficiency

## The benefits for you:

- Modular cleaning device in a new design for cleaning various tool holder tapers
- Adjustable timer
- Newly designed clamping principle for even better ergonomics and a combined system for DIN and MAS BT steep tapers
- Fully compatible with the RoWi2 system
- Ergonomic design for safe and easy working
- Resistant to rust and cooling lubricants
- Fast, careful and reliable cleaning of extremely dirty or resinous tool holders

## Clean tool holders ensure precision at the interface:

- Reduces waste
- Increases the tool life
- Protects the machine spindle
- Ensures exchange precision and process safety
- Preserves the run-out precision of the tool system



Push-button and timer



Form-fitting integrated handles enable the device to be lifted with ease

### Drive unit

Item no.: 260.550  
Drive: Alternating current motor with about 65 rpm  
Connection: 1 ~ 100 - 240 V, 45 - 65 Hz  
Output: max. 0.12 kW  
Taper sizes: All common taper sizes available in HSK, PSC and SK.

### Cleaning attachment

Item no.	Taper size*1
260.553	SK 40 DIN / MAS BT
260.554	SK 50 DIN / MAS BT
260.563	HSK 63 Form A, C, E
260.565	HSK 100 Form A, C, E
260.573	PSC 63

\*1 Other taper sizes available on request.

# CLEANER

Spindle and tool wiper.  
A clean solution.

# KELCH

Pioneer for precision and efficiency

## Spindle and tool cleaner

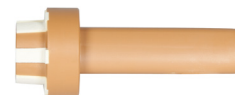
### Design / benefits:

- Basic body made of polystyrene, tapered surfaces with grooved, roughened fleece strips
- Non-slip polygon handle for easier handling with HSK and SK
- Excellent cleaning performance due to the highly absorbent, abrasion-free fleece and wide gaps
- Resistant to oil and emulsions
- Long service life

### Spindle wiper

To clean the inner tapers of machine spindles.

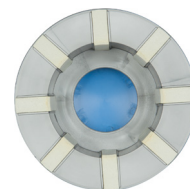
Item no.	Interface	
068.199	Morse taper	MK 1
068.100	Morse taper	MK 2
068.101	Morse taper	MK 3
068.102	Morse taper	MK 4
068.103	Morse taper	MK 5
<hr/>		
068.201	Steep taper	SK 30
068.202	Steep taper	SK 40
068.205	Steep taper	SK 45
068.203	Steep taper	SK 50
<hr/>		
068.721	HSK A/C	HSK 32
068.722	HSK A/C	HSK 40
068.723	HSK A/C	HSK 50
068.724	HSK A/C	HSK 63
068.725	HSK A/C	HSK 80
068.726	HSK A/C	HSK 100



### Tool wiper

To clean the outer tapers and contact faces of HSK tools.

Item no.	Interface	
068.602	HSK A-F	HSK 40
068.603	HSK A-F	HSK 50
068.604	HSK A-F	HSK 63
068.605	HSK A-F	HSK 80
068.606	HSK A-F	HSK 100



### Reflu cleaning agent

RoWi cleaning agent.

To thoroughly clean the tapered shafts.

Item no.	Pump spray containing
260.430	200 ml

